

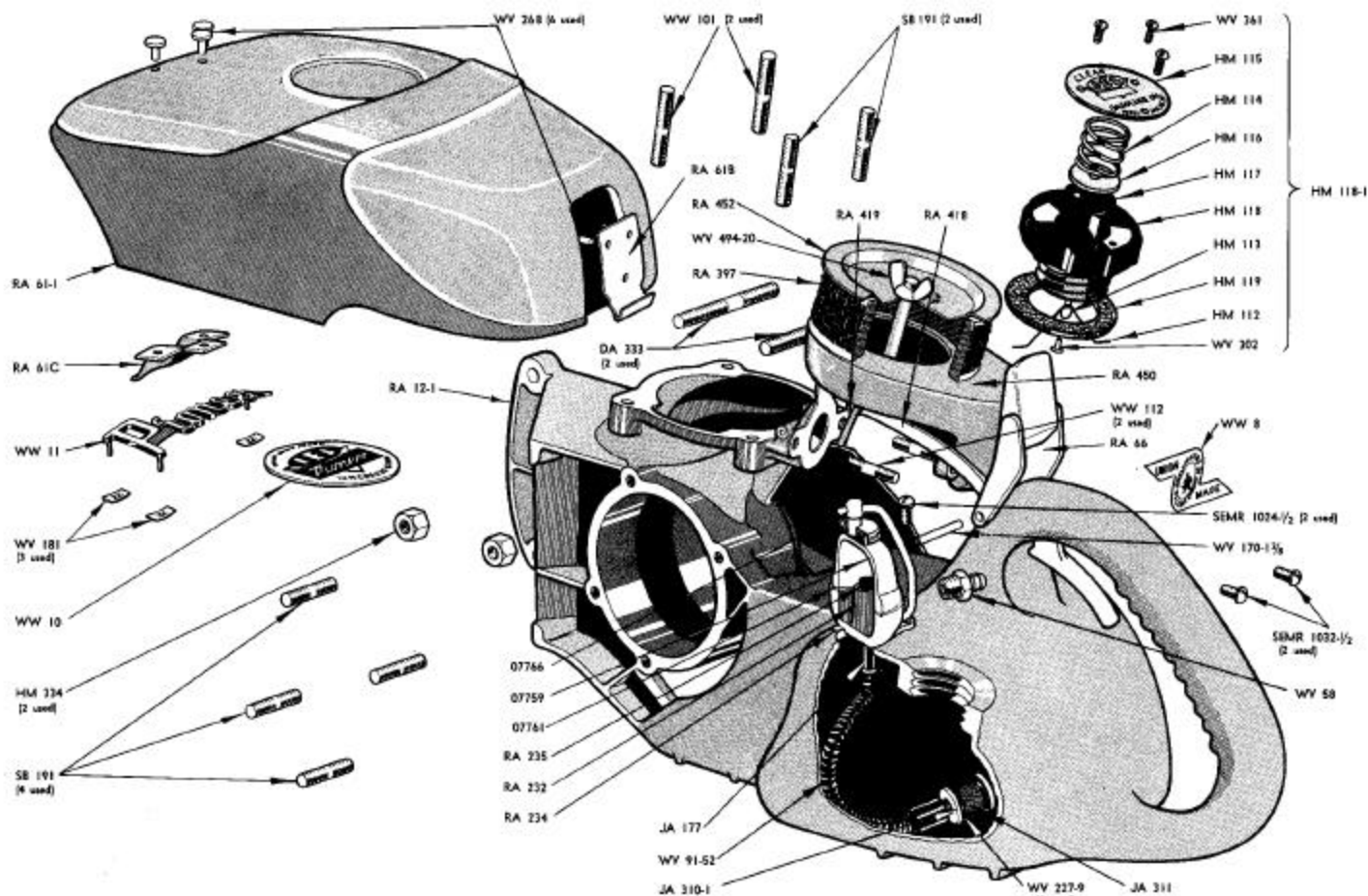
# **IEL PIONEER** **MODEL RA**

**INSTRUCTION MANUAL**  
**MANUEL D'INSTRUCTION**



**INDUSTRIAL ENGINEERING LIMITED**  
**VANCOUVER, B.C.**

**A SUBSIDIARY OF OUTBOARD MARINE CORPORATION OF CANADA LIMITED**



## GAS TANK

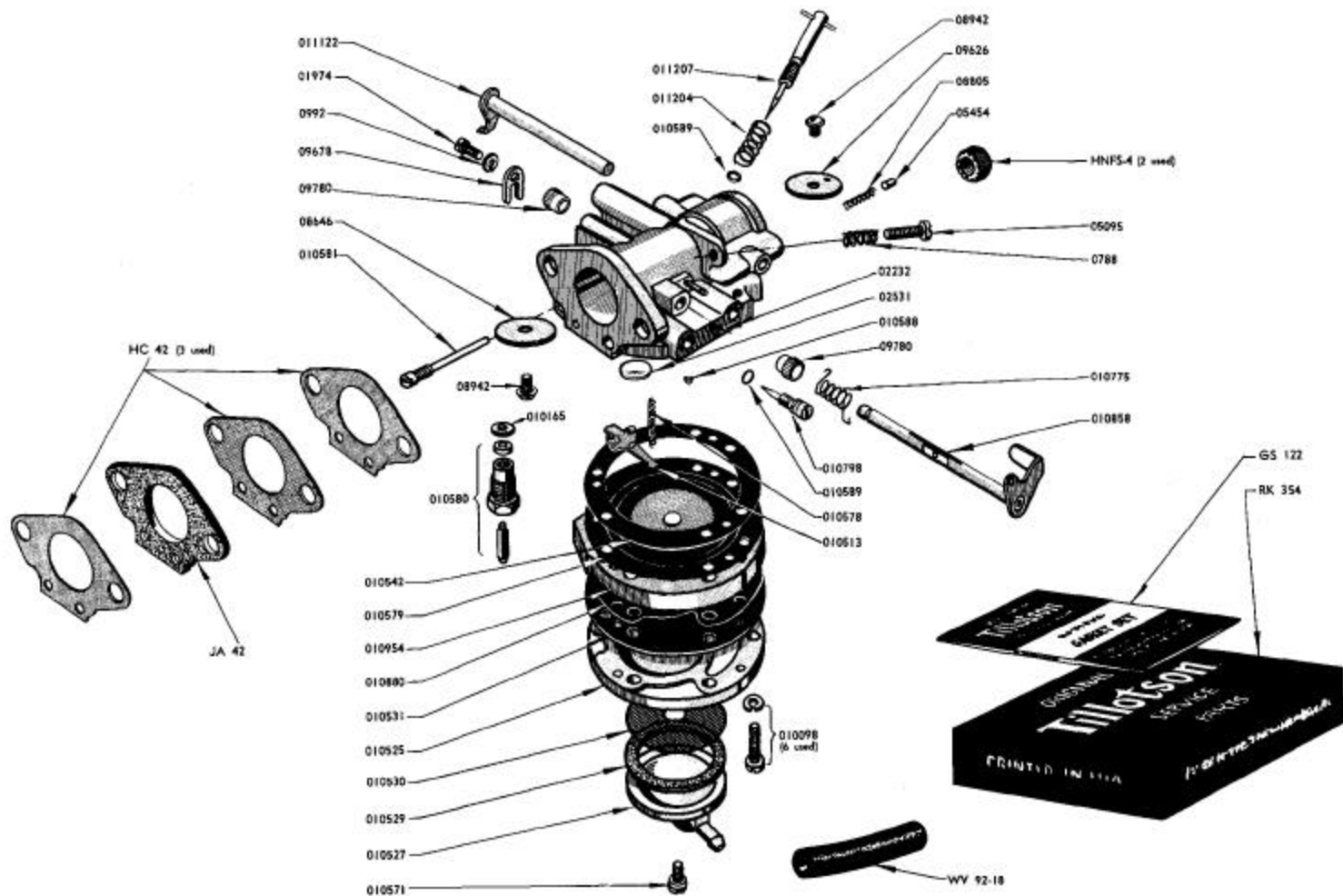
Part No.	Part Name
RA 12-1	Crankcase — Tank
SB 191	Short Cylinder Stud (2)
WW 101	Long Cylinder Stud (2)
SB 191	Fan Housing Stud (4)
WW 112	Carburetor Stud (2)
DA 333	Strut Stud (2)
HM 334	Strut Stud Nut (2)
07766	Clamp Unit
07759	Filter Bowl
RA 232	Filter Base
RA 234	Filter Base Gasket
RA 235	Filter Felt
SEMR 1024-1/2	Filter Base Screw (2)
WV 58	Gas Line Fitting
07761	Filter Bowl Gasket
RA 61-1	Shroud (outer) Assembly (includes parts marked **)
RA 61B	**Back Shroud Hook
RA 61C	**Front Shroud Hook
WV 268	**Rivet (6)
WW 10	**Name Plate
WW 11	**"Pioneer" Scroll
WV 181	**Push-on Nut (3)
WW 8	Union Label
RA 450	Air Cleaner Assembly

## RESERVOIR

Part No.	Part Name
RA 452	Air Cleaner Cover
WV 494-20	Air Cleaner Wing Nut
RA 397	Air Cleaner Element Assembly
SEMR 1032-1/2	Air Cleaner Screw (2)
RA 418	Throttle Trigger
WV 170-1 3/8	Throttle Hinge Pin
RA 419	Throttle Link
RA 66	Shroud Latch Assembly
JA 310-1	Gas Pickup Assembly
WV 91-52	Flexible Pickup Line
JA 311	Pickup Screen
WV 227-9	"O" Ring (2)
JA 177	Flex Pickup Connection
HM 118-1	Gas Cap Assembly (includes parts marked *)
HM 118	*Gas Cap
HM 117	*Gas Cap Valve
HM 116	*Gas Cap Valve Plate
HM 114	*Gas Cap Spring
HM 115	*Gas Cap Cover Plate
WV 302	*Gas Cap Rivet
HM 113	*Gas Cap Chain
HM 112	*Gas Cap Lock Spring
WV 361	*Gas Cap Screw (3)
HM 119	Gas Cap Gasket







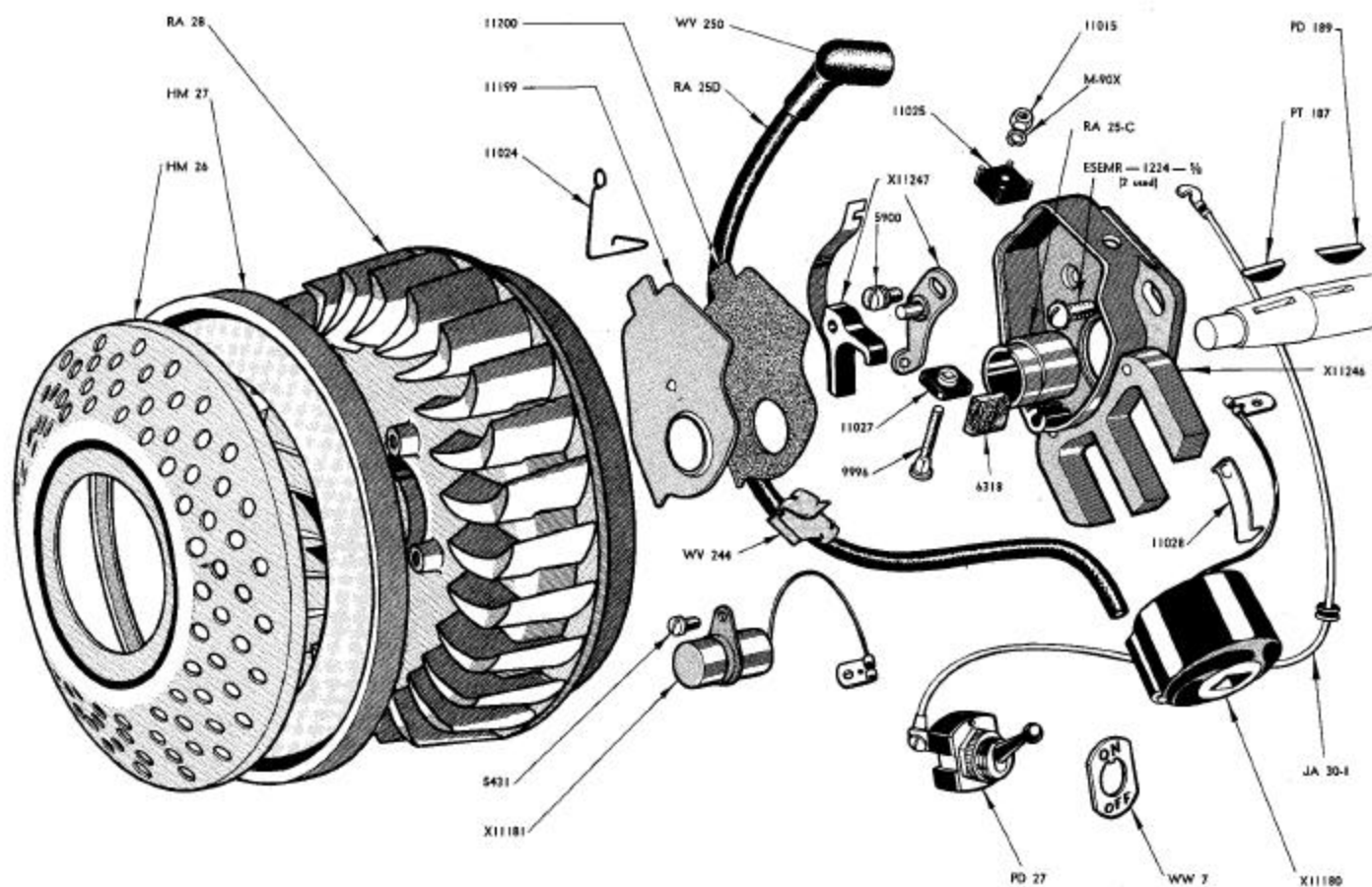
## CARBURETOR

Part No.	Part Name
RA 47	Carburetor Assembly
JA 42	Carburetor Insulating Gasket
HC 42	Carburetor Gasket (3)
HNFS-4	Carburetor Nut (2)
WV 92-18	Fuel Line
010588	*Body Channel Cup Plug
02531	*Body Channel Welch Plug
011122	Choke Shaft & Lever
09626	Choke Shutter
08942	Choke Shutter Screw
05454	Choke Friction Pin
08805	Choke Friction Spring
02232	Diaphragm Chamber Drain Screw
010542	Diaphragm Gasket
010579	*Diaphragm
010954	Diaphragm Cover
010880	Fuel Pump Gasket
010531	*Fuel Pump Diaphragm
010525	Fuel Pump Body
010098	Fuel Pump Body Screw & Lockwasher (6)
010530	*Fuel Strainer Screen
010529	Fuel Strainer Cover Gasket
010527	Fuel Strainer Cover

## CARBURATEUR

Part No.	Part Name
010571	*Fuel Strainer Cover Ret. Screw
010798	*Idle Adjustment Screw (inc. 010589)
010589	Seal Ring
05095	*Idle Speed Regulating Screw
0788	*Idle Speed Regulating Screw Spring
010580	*Inlet Needle, Seat & Gasket
010165	Inlet Seat Gasket
010513	*Inlet Control Lever
010581	*Inlet Control Lever Pinion Screw
010578	*Inlet Tension Spring
011207	*Main Adjustment Screw (includes 010589 - 011204)
011204	Main Adjustment Screw Spring
010858	Throttle Shaft & Lever
09780	Throttle Shaft Bushing (2)
09678	Throttle Shaft Clip
0992	Throttle Shaft Clip Lockwasher
01974	Throttle Shaft Clip Retaining Screw
010775	*Throttle Shaft Return Spring
08646	Throttle Shutter
08942	*Throttle Shutter Screw
GS-122	*GASKET & PACKING SET
RK-354	REPAIR PARTS KIT

(\* ) Indicates contents of repair parts kit.

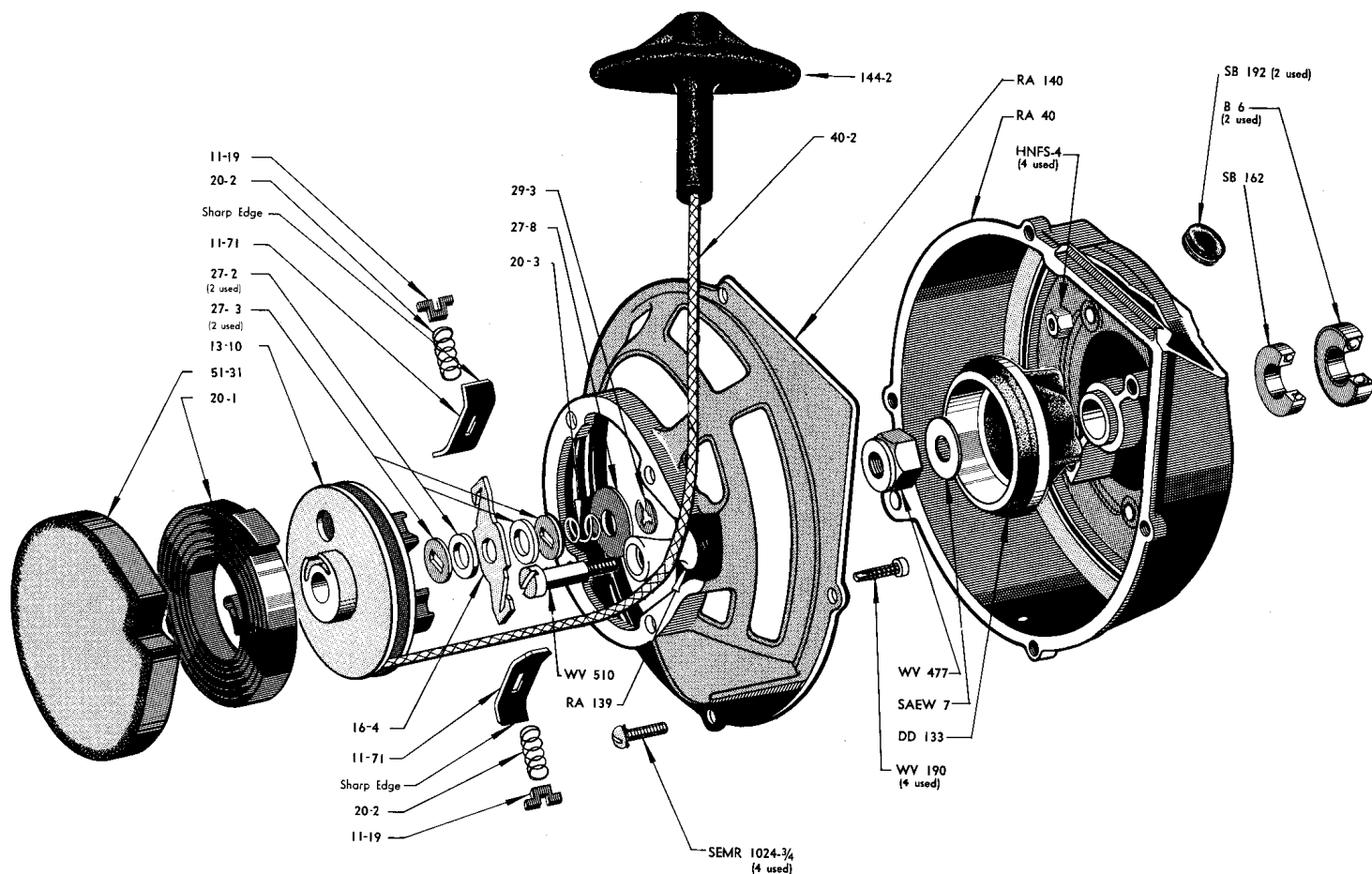


## MAGNETO

## MAGNETO

Part No.	Part Name
PT 187	Flywheel Key
PD 189	Magneto Cam Key
RA 25-C	Magneto Cam
RA 25-A	Magneto Stator Complete includes coil, cond., points, etc.
ESEMR 1224-5/8"	Magneto Stator Screw (2)
RA 25D	Ignition Wire
WV 250	Sparky
WV 244	Wiring Clip
PD 27	Ignition Stop Switch
JA 30-1	Switch Wire Assembly
RA 28	Flywheel
HM 27	Baffle
HM 26	Rotary Screen
WW 7	On-off Switch Plate
M-90X	*Connection Stud Nut Lockwasher
5431	Condenser Clamp Screw

Part No.	Part Name
5900	Fixed Contact Clamp Screw
6318	Cam Wiper Felt
9996	*Connection Stud
11015	*Connection Stud Nut
11024	Breaker Box Cover Spring
11025	*Connection Stud Insulator (outside)
11027	*Connection Stud Insulator (inside)
11028	Coil Wedge Spring
X11061	Terminal Connection Unit (includes parts marked *)
X11181	Condenser
X11180	Coil Group
11199	Cover
11200	Gasket
X11246	Stator Plate Group (Stator Plate and Coil Core only)
X11247	Breaker Point Replacement Set

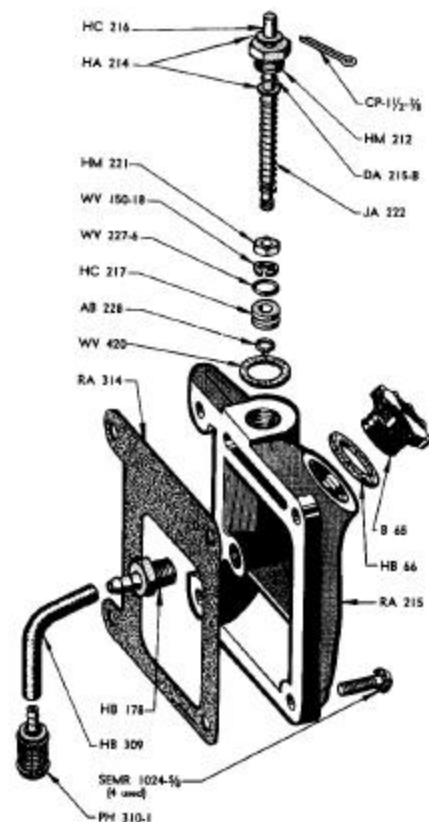
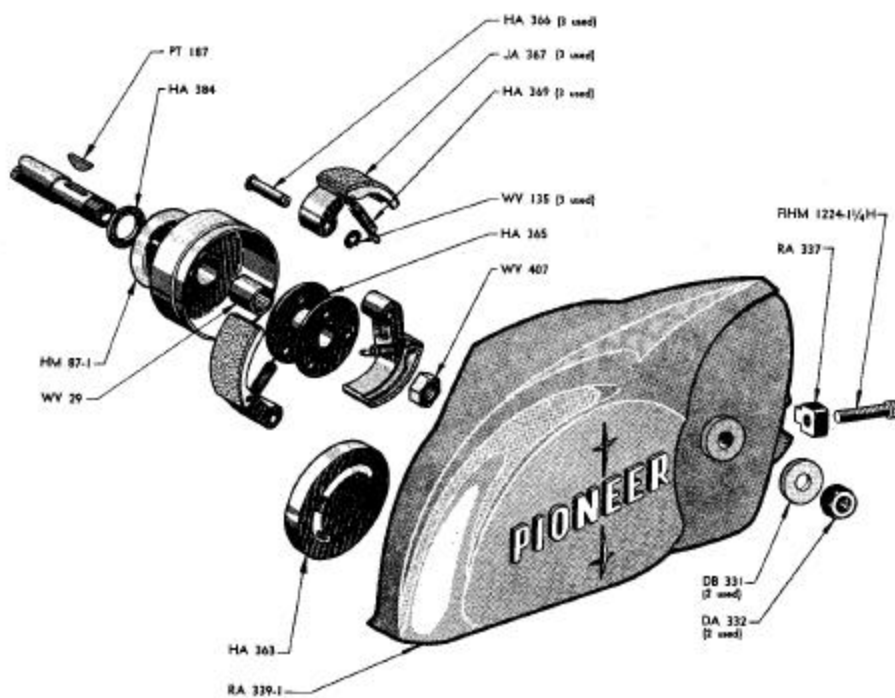


## STARTER

## DEMARREUR

Part No.	Part Name
RA 40	Fan Housing
HNFS-4	Fan Housing Nut (4)
SB 192	Ignition Wire Grommet (2)
B 6	Main Bearing (2)
SB 162	Magneto End Seal
DD 133	Shaft Cup
SAEW 7	Flywheel Washer
WV 477	Flywheel Nut
RA 140	Starter Adapter
SEMR 1024- $\frac{3}{4}$	Starter Adapter Screw (4)
RA 139	Starter Cord Roller
WV 510	Roller Pin
HBA 125	Starter Assembly (includes parts marked with *)
WV 190	Starter Screw
40-2	*Starter Cord
144-2	*Starter Handle
11-19	*Spring Retainer (2)

Part No.	Part Name
20-2	*Brake Lever Spring (2)
11-71	*Friction Shoe Plate (2)
27-2	*Fibre Washer (2)
27-3	*Brake Washer (2)
13-10	*Rotor Assembly
51-31	*Starter Cover
20-1	*Rewind Spring
16-4	*Brake Lever
29-3	*Clip Ring
27-8	*Brake Retainer Washer
20-3	*Brake Spring
11-71	Starter Pawl Assembly consisting of
	(1—16- 4)
	(2—11-71)
	(2—20- 2)
	(2—11-71)



## CLUTCH

## L'EMBRAGAGE

## OIL PUMP

## POMPE A HUILE

### Part No.

### Part Name

HM 87-1	Sprocket Assembly
WV 29	Sprocket Bearing
HA 384	Inside Sprocket Washer
HA 365	Clutch Driver
HA 366	Clutch Driver Pin (3)
WV 135	Clutch Driver Clip (3)
PT 187	Clutch Driver Key
WV 407	Clutch Driver Nut
JA 367	Clutch Shoe Assembly (3)
HA 369	Clutch Spring (3)
HA 363	Clutch Cover
RA 339-1	Strut Assembly
FIHM 1224-1 1/4 H	Chain Adjusting Screw
RA 337	Chain Adjusting Pin
DA 332	Strut Nut (2)
DB 331	Strut Washer (2)

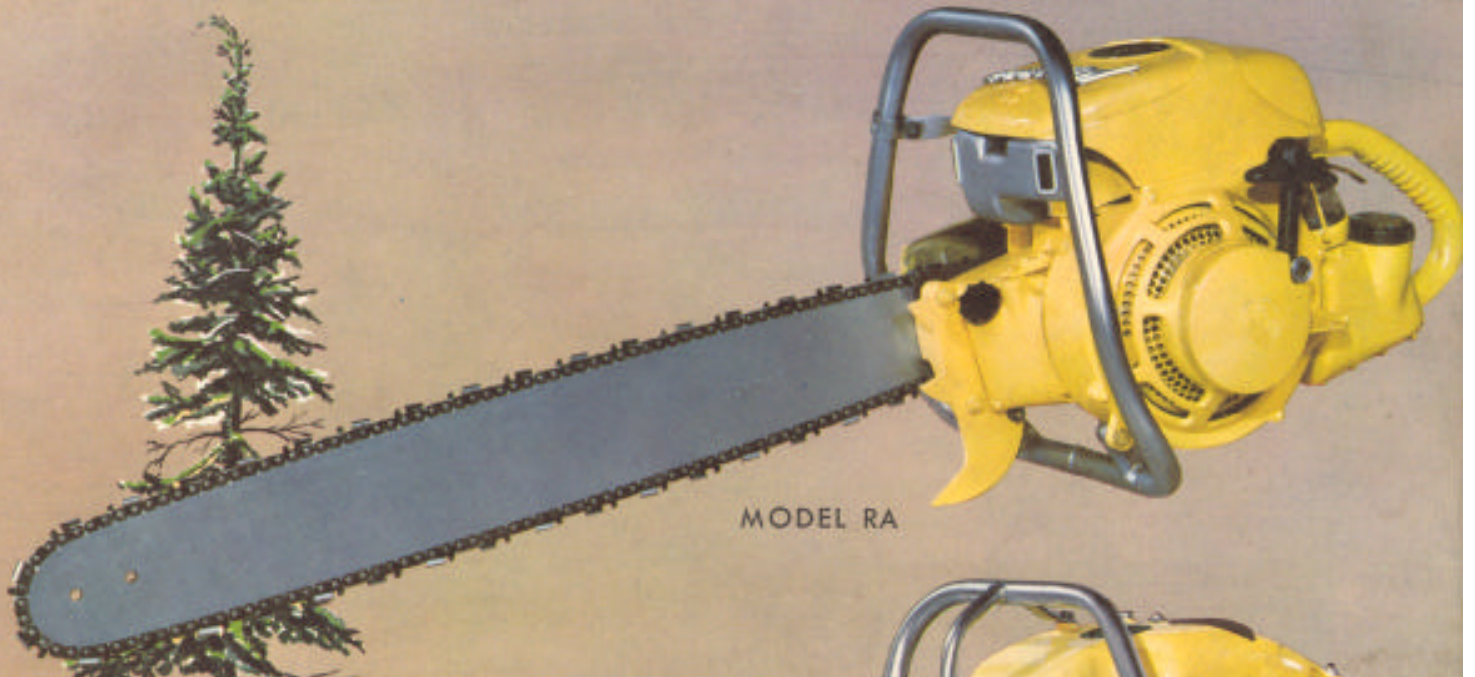
### Part No.

### Part Name

RA 215-1	Oiler Body Complete
RA 215	(includes parts marked *)
RA 314	*Oiler Body
SEMR 1024-5/8	*Oiler Body Gasket
HC 216	*Oiler Body Screw (4)
JA 222	*Pump Rod
HM 221	*Pump Rod Spring
WV 150-18	*Pump Rod Guide
HC 217	*Pump Guide Clip
WV 227-6	*Pump Piston
AB 228	*Pump Piston Gland ("O" Ring)
HM 212	*Pump Piston Clip
WV 420	*Gland Nut
HA 214	*Gland Nut Gasket
DA 215-B	*Gland Washer
CP-1 1/2-3/8	*Gland "O" Ring
HB 178	*Cotter Pin
HB 309	*Oiler Intake Connector
PH 310-1	*Oiler Inlet Tube
B 65	*Oiler Pick-up Assembly
HB 66	*Oiler Filler Cap Unit
	Oiler Filler Cap Gasket



BUILDERS OF THE WORLD'S BEST CHAIN SAWS



MODEL RA



MODEL JB



TO PROTECT YOUR SAWS ALWAYS USE GENUINE  
IEL PIONEER SAW CHAINS AND PARTS