

CANADIEN

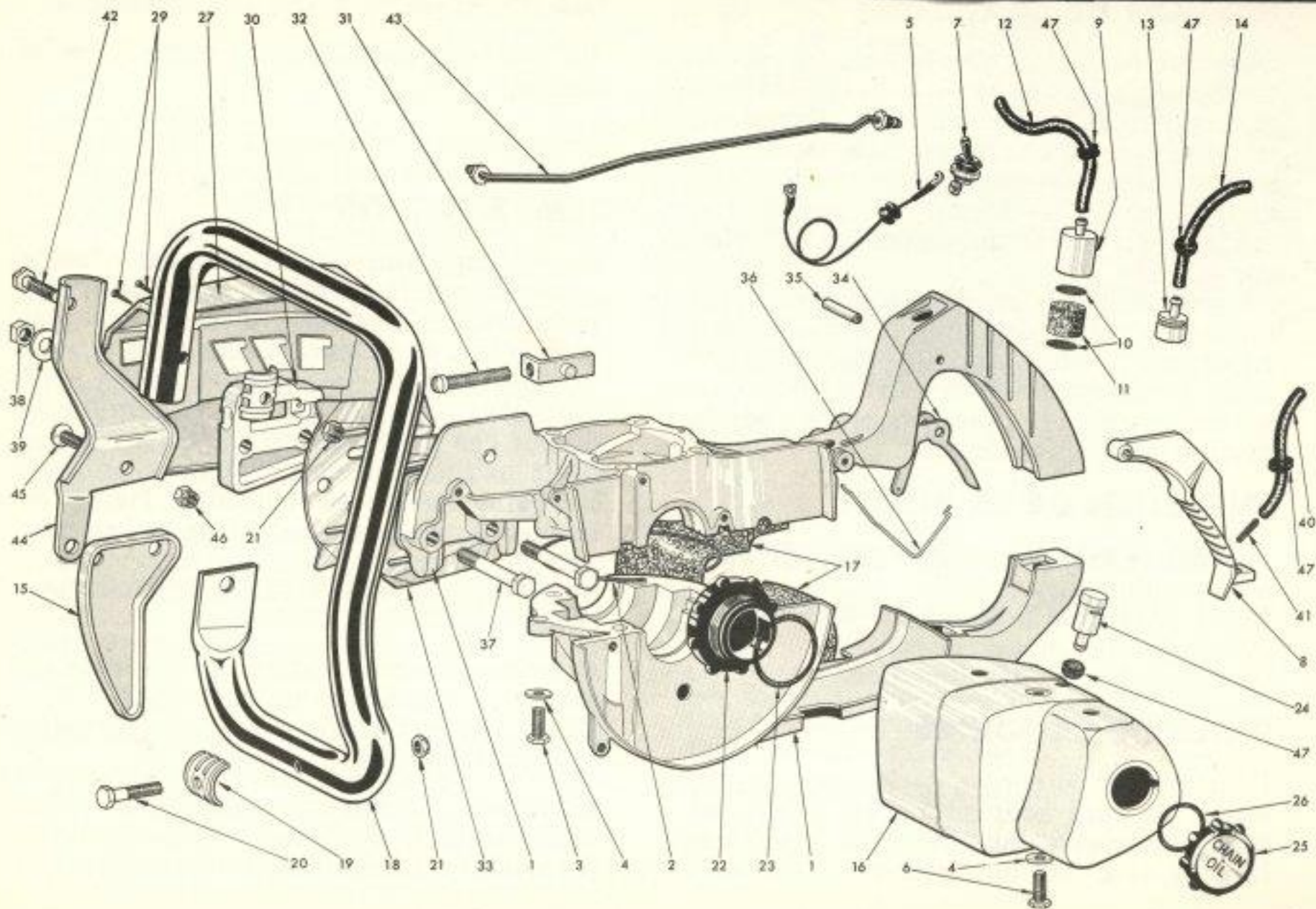


MODELE

1

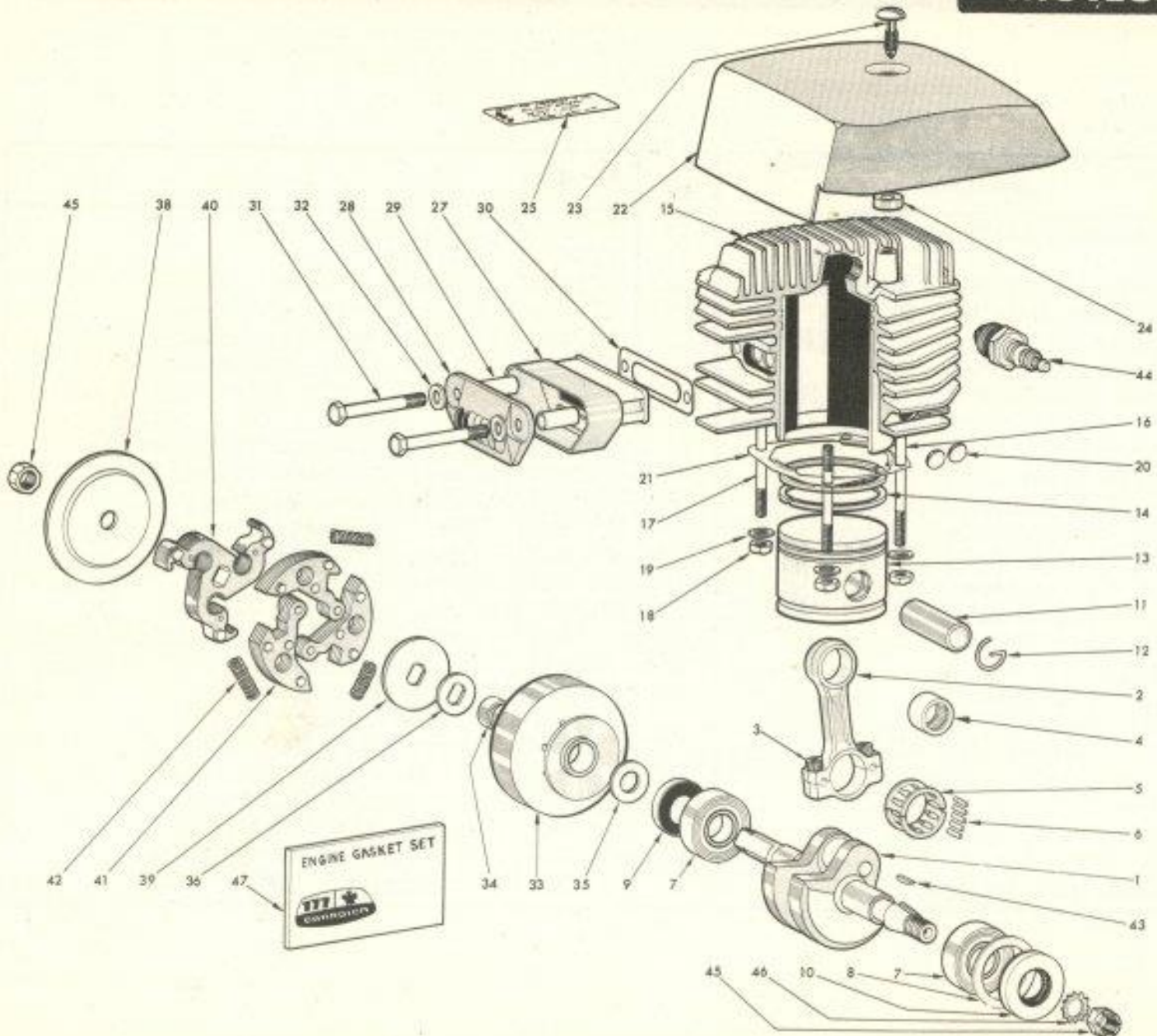
2

3



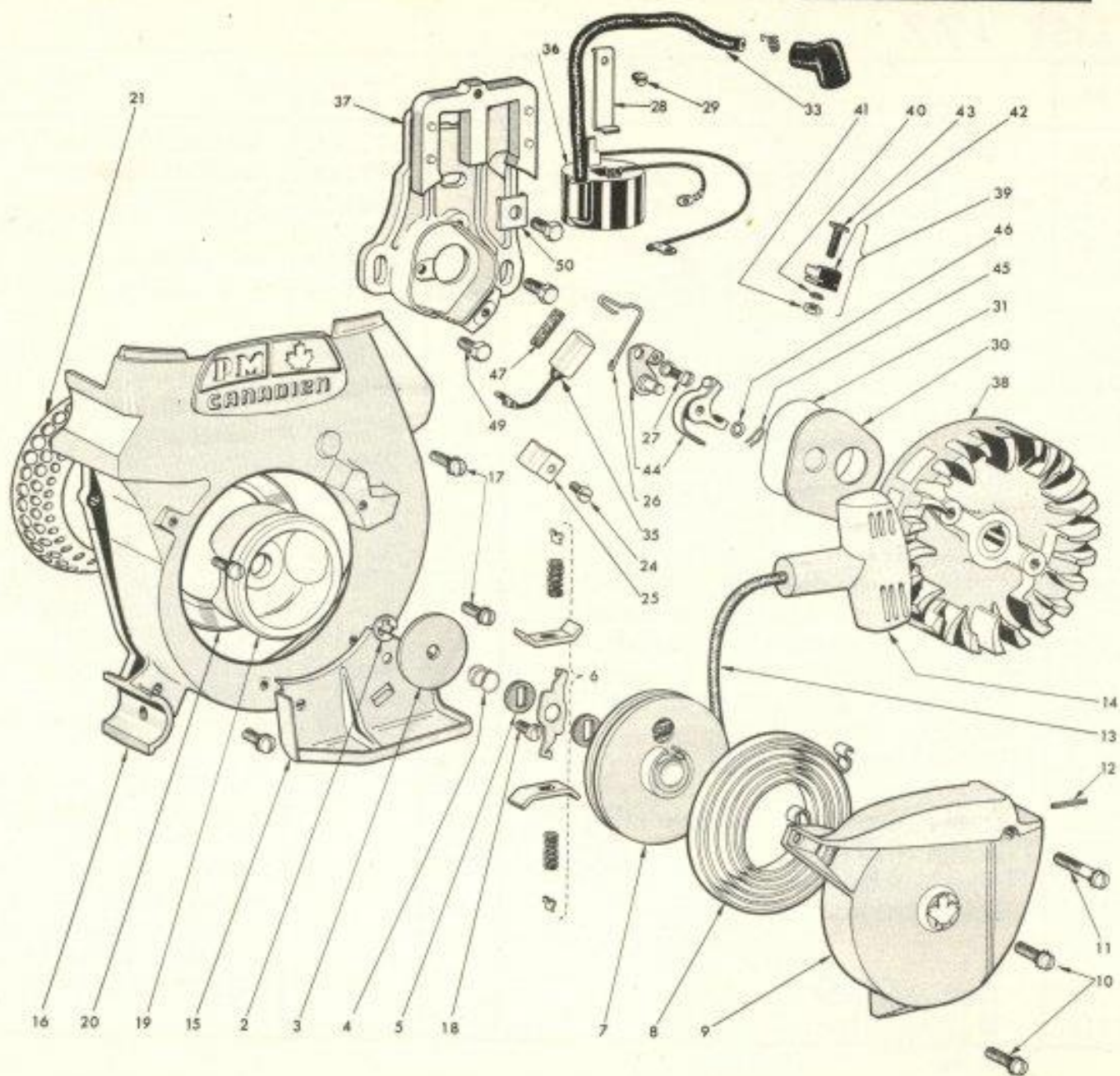
PARTS LIST 177

Ref. No.	Part No.	Description	Ref. No.	Part No.	Description
1	177602	Crankcase Assy. Complete (includes *)	24	177634	Tank Vent Assy.
2	177062	*C/case Joint Seal (2 used))	25	275638	Oil Cap
3	701414	*Mounting Bolt 1/4 - 20 x 7/8"	26	271258	Oil Cap O-Ring
4	275069	*Washer (2 used) (Front)	27	177648	Chain Cover (includes †)
5	x16395	Ground Lead	28	177380	†Chain Cover (Less Bar Pad)
6	702014	*Screw 1/4—20 x 1 1/4" LG Hex Slotted (Rear)	29	275205	†Screw (Bar Pad to Cover) (2 used)
7	270238	Switch	30		
8	177169	Handle Grip	31	270649	Tensioner Assy. (includes ††)
9	177633	Fuel Pickup Assy. (includes **)	32	737814	††Chain Tensioner Screw
10	270208	**Fuel Pickup Screen (2 used)	33	177160	Guide Plates (2 used)
11	19159	**Fuel Pickup Felt	34	177230	Throttle Trigger
12	177206	Fuel Pickup Hose	35	175231	Trigger Hinge Pin
13	271629	Oil Pickup Head Assy.	36	177232	Throttle Link (2 used)
14	177270	Oil Pickup Hose	37	703665	Bolt Guide Bar 5/8 - 24 x 2 1/4
15	177344	Bumper Plate	38	850065	Nut Guide Bar 5/8" — 24 (2 used)
16	177740	Fuel Tank Assembly	39	855915	Washer Guide Bar Pad (2 used)
17	177224	Tank Mounting Damper	40	270206	Primer Pickup Line
18	177016	Front Handle Bar	41	177226	Primer Filter
19	21094	No Squash Washer (2 used)	42	702014	Screw 1/4 - 20 x 1 1/2"
20	702414	Screw 1/4 — 20 x 7/8"	43	177745	Oil Delivery Line Assy.
21	850314	Nut 1/4 — 20 (2 used)	44	177006	Handle Bar Bracket
22	270202	Fuel Cap	45	741264	Bolt 1/4" — 28 x 3/4"
23	19137	Gasket (Fuel Cap)	46	850364	Flex Lock Nut 1/4" — 28
			47	177229	Grommet (4 used)



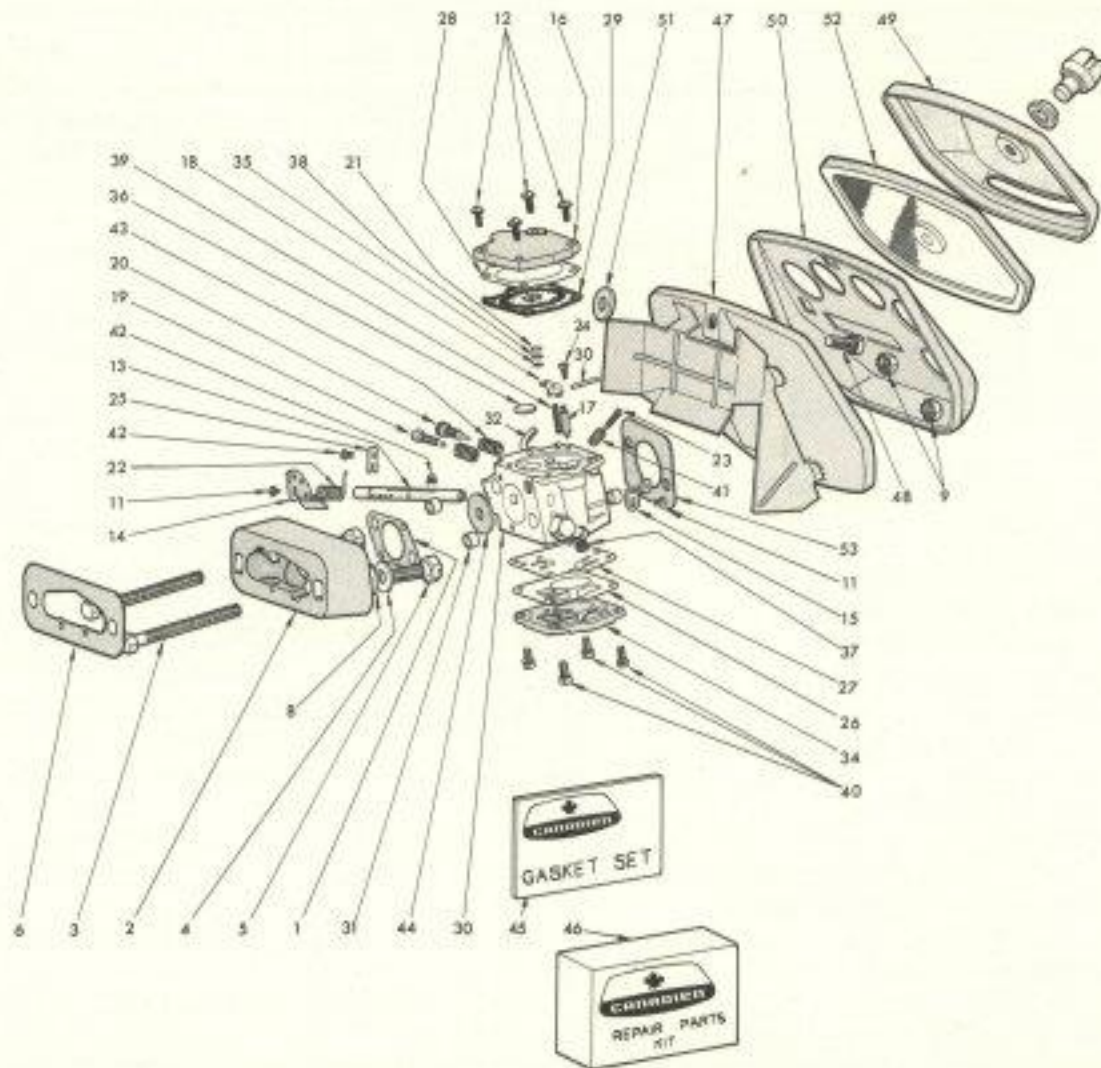
PARTS LIST 177

Ref. No.	Part No.	Description	Ref. No.	Part No.	Description
1	177025	Crankshaft	29	177141	Muffler Spacer Tubes (2 used)
2	275606	Con. Rod Assembly (includes *)	30	177140	Muffler Gasket
3	761060	*Con. Rod Screw (2 used)	31	703414	Muffler Mounting Screw ¼" — 20 x 2½" (2 used)
4	275041	*Wrist Pin Bearing			
5	275605	*Con. Rod Big End Brg. (c/w needles & cage)	32	275069	Washer ¼" Flat (2 used)
6	275040	Big End Needle (12 used)	33	177651	8 Tooth ¾ Pitch Sprocket & Drum Assy. c/w Bearing
7	270030	Main Bearing (2 used)	34	270348	Sprocket Bearing (2 used)
8	177166	Bearing Retainer Ring	35	19029	Thrust Washer (inside)
9	270033	Seal (Clutch Side)	36	276378	Thrust Washer (outside)
10	177032	Seal (Magneto Side)	37	177647	Clutch Assembly (includes †)
11	21017	Wrist Pin	38	275364	Clutch Side Plate (outer)
12	270047	Wrist Pin Clips (2 used)	39	276364	Clutch Side Plate (inner)
13	270045	Piston	40	177643	†Clutch Driver
14	270050	Piston Rings (2 used)	41	177654	†Clutch Shoe (3 used)
15	177612	Cylinder Block Assy. Complete with Studs (includes ††)	42	276363	†Clutch Spring (3 used)
16	177023	††Stud (Long Back) (2 used)	43	856303	Magneto Rotor Key
17	177037	††Stud (Short Front) (2 used)	44	10252	Spark Plug
18	850064	Nut ¼" — 28 Hex. (4 used)	45	850467	Crankshaft Nut LH THD(2 used)
19	275069	Washer (4 used)	46	854117	Washer
20	177061	††Welch Plug (4 used)	47	177710	Engine Gasket Set (includes)
21	177058	Cyl. Base Gasket			Crankcase Joint Seal (2 used)
22	177640	Outer Shroud Assy. (includes **)			Cylinder Base Gasket
23	177301	**Screw (Shroud)			Muffler Gasket
24	270312	**Screw Retainer			Fuel Tank Grommet (4 used)
25	177307	Instruction Decal			Fuel Tank Damper
26					Gasket (Carburetor to Insulator)
27	177617	Muffler Body			Gasket (Insulator to Cylinder)
28	177136	Muffler Front Cover			Gasket (Carburetor to Air Filter)



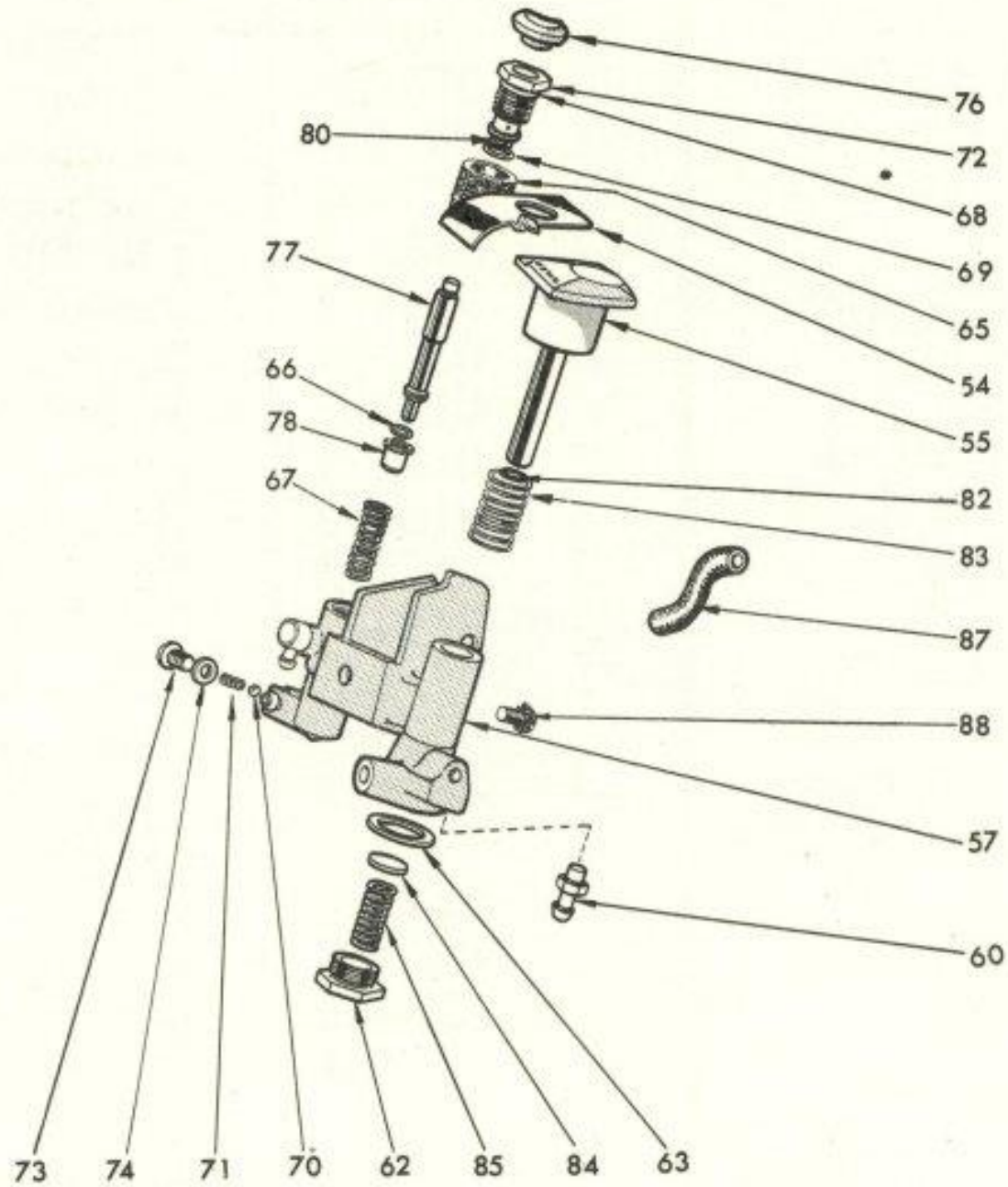
PARTS LIST 177

Ref. No.	Part No.	Description	Ref. No.	Part No.	Description
1	177674	Starter Complete	27	*11717	Fixed Contact Clamp Screw Assy.
2	29-3	Retaining Ring	28	*13303	Coil Wedge Spring
3	27-8	Brake Retainer Washer	29	*13457	Coil Grounding Screw
4	20-3	Brake Spring	30	*16389	Cover
5	27-80	Brake Washer (Fibre) (2 used)	31	*16388	Cover Gasket
6	111-171	Replacement Pawl Assembly	32		
7	13-15	Rotor	33	*16387	High Tension Lead (includes 8824 Terminal Spring & Cover)
8	20-35	Rewind Spring	34		
9	177675	Starter Housing	35	*X16410	Condenser Group
10	726210	Housing Screw, Short, 10-24 x 3/4" (2 used)	36	*X16330	Coil Assembly
11	727410	Housing Screw Long, 10-24 x 1 1/2"	37	*X16365	Stator Plate Group (Plate and Core only)
12	51-206	Roll Pin	38	Y16325	Flywheel
13	140-6	Starter Cord	39	*X14277	Terminal Connection Unit (includes †)
14	144-20	"T" Handle Assembly	40	†M-90X	Connection Stud Nut Lock Washer
15	177390	Starter Step Plate	41	†11015	Connection Stud Nut
16	177077	Blower Housing	42	†13309	Connection Stud Insulator
17	726210	Blower Housing Screws (4 used)	43	†14175	Connection Stud
18	720810	Starter Step Plate Screw 10 - 24 x 1/2" Pan Sems	44	*X16191	Breaker Point Set (includes ‡)
19	177126	Starter Cup	45	‡4210	Breaker Arm Lock
20	270128	Starter Cup Shield	46	‡10407	Thurst Washer
21	177127	Starter Screen	47	‡14956	Cam Wiper Felt
22	177601	Magneto Assembly Complete	48		
23	X16331	Stator Assembly Complete (includes *)	49	706010	Screw Stator/c/case 10-24 x 5/8" Hex. (3 used)
24	*5411	Condenser Clamp Screw Assy.	50	275087	Primary Wire Clip
25	*8854	Condenser Clamp			
26	*11024	Breaker Box Cover Spring			



PARTS LIST 177

Ref. No.	Part No.	Description	Ref. No.	Part No.	Description
1	177098	Gasket (Carb.)	28	013215	Diaphragm Metering Gasket
2	177096	Insulator Block	29	013278	Metering Diaphragm Assembly
3	703860	Screw 10-32 x 2 $\frac{3}{8}$ " Hex. (2 used)	30	†177095	Carburetor
4	270027	Washer Insulator Block Screw (2 used)	31	†177028	Insulator Sleeve (4 used)
5	702014	Screw Insulator Block $\frac{1}{4}$ x 20 x 1 $\frac{1}{4}$ " Hex. Hd. (2 used)	32	†177093	Carburetor Nozzle (Primer)
6	177097	Gasket Insulator Block	33	013210	Fulcrum Pin
7			34	013167	Pump Cover
8	270026	Washer (Fibre) Insulator Block Screw (2 used)	35	012884	Screen
9	850260	Nut 10 - 32 Keps (2 used)	36	012809	Welch Plug
10	177695	Carburetor (includes†)	37	012727	Screen
11	013849	Screw Throttle Shaft (2 used)	38	012345	Retaining Ring
12	013846	Screw Metering Diaphragm Cover (4 used)	39	011503	Tension Spring
13	013845	Throttle Shaft	40	011441	Screw (4 used)
14	013844	Throttle Lever Stop	41	011431	Idle Speed Spring
15	013843	Throttle Lever	42	010280	Screw (2 used)
16	013708	Diaphragm Cover	43	08793	Adjusting Screw Spring (2 used)
17	013396	Inlet Needle	44	04119	Throttle Shutter
18	013395	Inlet Valve Control Lever	45	RG174	Gasket Set
19	013376	Idle Adjustment Screw	46	RK668	Repair Parts Kit
20	013374	Main Adjustment Screw	47	177751	Air Filter Base Plate
21	013372	Welch Plug	48	725814	Screw Filter to Cyl. Head $\frac{1}{4}$ "-20 x $\frac{1}{2}$ " Pan
22	013297	Throttle Return Spring	49	177752	Air Filter Cover Assembly
23	013270	Idle Speed Regulating Screw	50	177173	Air Flow Distributor
24	013269	Screw	51	270026	Fibre Washer
25	013219	Throttle Shaft Clip	52	177624	Air Filter Element
26	013218	Fuel Pump Gasket	53	177079	Gasket (Carb. to Air Filter)
27	013652	Fuel Pump Diaphragm			



PARTS LIST 177

Ref. No.	Part No.	Description	Ref. No.	Part No.	Description
54	177269	Oiler Button Stop	71		†Valve Spring
55	177613	Oiler Piston Assembly	72		†Primer End Cap
56	177742	Oiler & Primer Body Assembly (includes *)	73		†Screw
57	177192	*Oiler & Primer Body	74		†Primer Plug Washer
58			75	177761	Primer Piston Assembly (includes ††)
59			76		††Primer Push Button
60	271627	Oil Pickup Connector	77		††Primer Piston
61			72		††Primer End Cap
62	177255	Oiler End Cap	78		††Primer Piston Cap
63			65		††Primer Dust Seal
64	177763	Fuel Primer Repair Kit (includes †)	80		††"O" Ring
65		†Primer Dust Seal	81	177762	Oil Pump Repair Kit (includes **)
66		†"O" Ring 11/32" dia.	82		**"O" Ring
67		†Primer Piston Return Spring	83		**Return Spring
68		†"O" Ring 1/2" dia.	84		**Valve Disc
69		†"O" Ring 3/8" dia.	85		**Valve Spring
70		†Steel Ball	63		**End Cap Gasket
			87	177179	Primer Delivery Line
			88	725410	Screw 10 — 24 x 1/2" Pan Sems