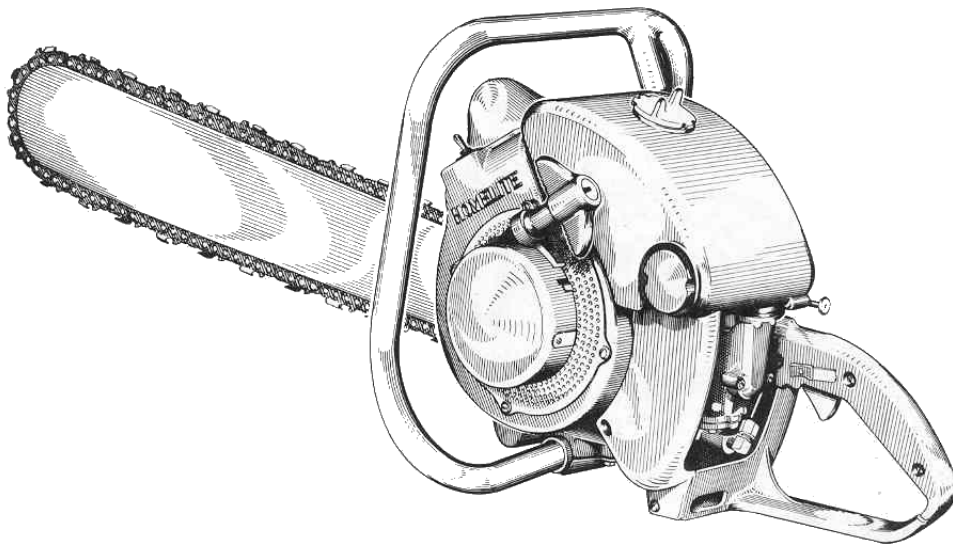


PARTS LIST

MODEL 17 HOMELITE CHAIN SAW



Gasoline-Engine-Driven

HOMELITE CORPORATION
PORT CHESTER, N.Y.

IGNITION AND GOVERNOR PARTS

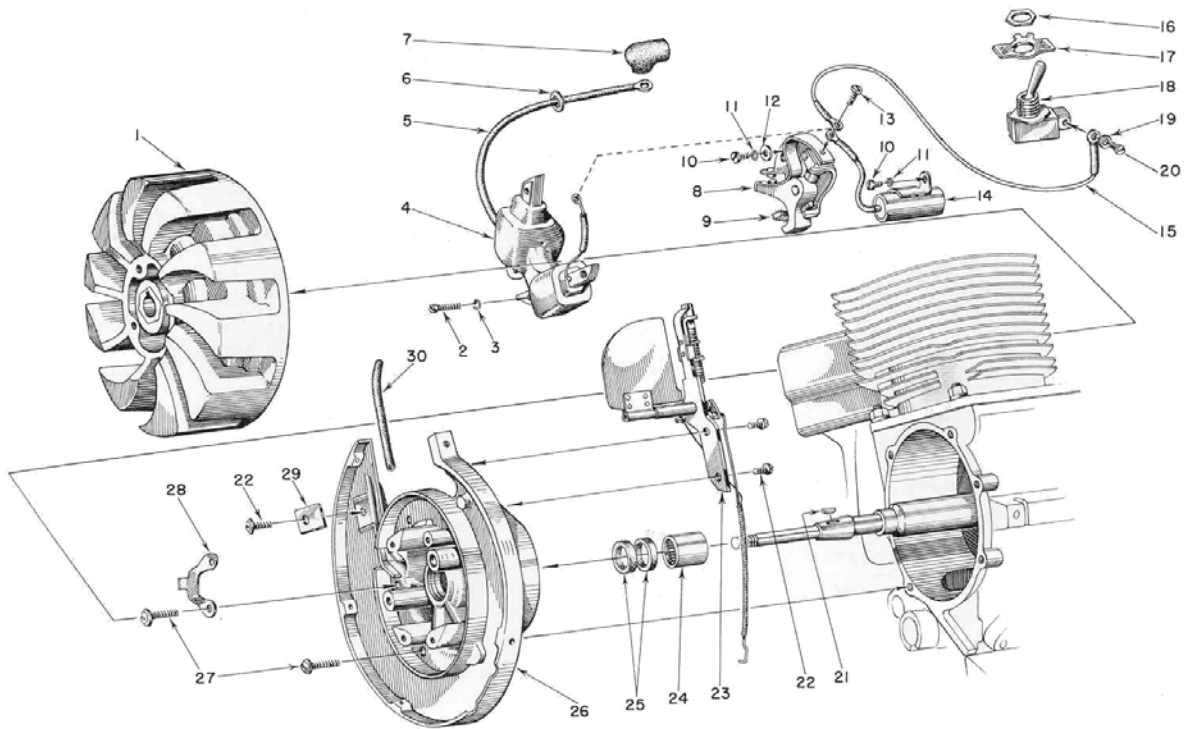


FIGURE 2

HOMELITE CHAIN SAW MODEL 17

PARTS LIST FOR FIGURE 2

Index No.	Part No.	Nomenclature	No. Required	Index No.	Part No.	Nomenclature	No. Required
1	55011-1	Rotor—Magneto	1	16	73614	Nut—Starting switch lock	1
2	80475	Screw—Fil. hd., 6-32 x 3/4"	4	17	72085-A	Plate—Indicating ("On-Off")	1
3	83004	Washer—Lock, #6	4	18	*	Switch—Toggle	1
4	55232	Coil and Core Assembly	1	19	83071	Washer—Lock #5 int.	2
5	55235	Lead—High tension	1	20	80469-1	Screw—Binding hd., 5-40 x 1/2"	2
6	60929	Grommet	1	21	75078	Key—Rotor, Woodruff #212	1
7	55296	Boot—Spark plug	1	22	80575	Screw—Spin-lock, 8-32 x 1/4"	3
8	55229	Breaker Point Assembly	1	23	AA-55147	Governor Assembly	1
	55230	Washer—Spacing (not shown)	2		AA-55278	Back Plate Assembly	1
9	55234	Wick—Felt (included with item 8)	1			Composed of	
10	80338	Screw—Fil. hd., 8-32 x 9/16"	2	24	55204	Bearing—Needle, Torr. #GBN-1012	1
11	83060	Washer—Lock, #8	2	25	71597	Seal—Garlock	2
12	84048	Washer—Contact screw	1	26	*	Plate—Back	1
13	80587	Screw—Self tapping	1	27	80576	Screw—Spin-lock, 10-32 x 9/16"	6
14	55233	Condenser Group	1	28	55160	Clamp—Magneto lead, inner	1
15	AA-55283	Ground Lead Group	1	29	55161	Clamp—Magneto lead, outer	1
	AA-72094	Starting Switch Assembly	1	30	55290	Sleeve—Insulation, 2" long	1
		Composed of					

* Not supplied separately

FUEL TANK AND PRESSURE LUBRICATOR PARTS

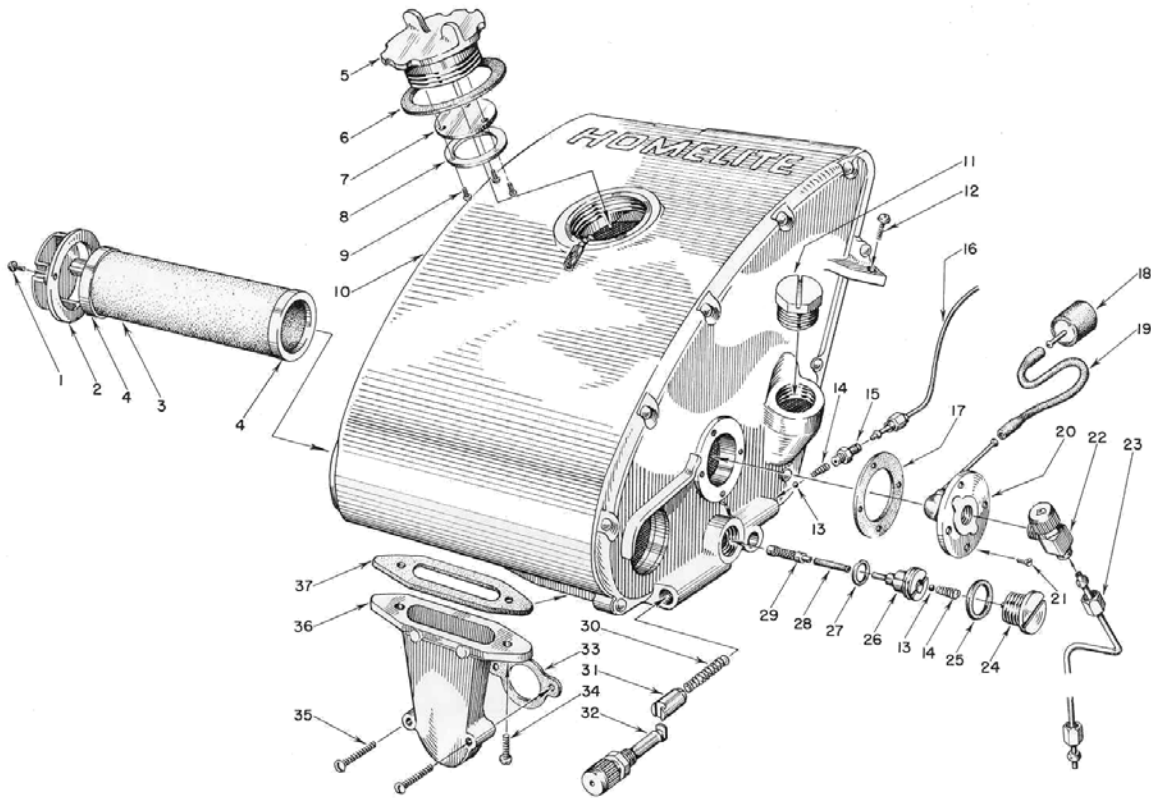


FIGURE 3

HOMELITE CHAIN SAW MODEL 17

PARTS LIST FOR FIGURE 3

Index No.	Part No.	Nomenclature	No. Required	Index No.	Part No.	Nomenclature	No. Required
1	80571	Screw—Spin-lock, 6-32 x 3/8"	2	17	72174	Gasket—Fuel Outlet Fitting	1
2	55066	Cap—Air filter	1	AA-72104	Fuel Outlet Fitting Assembly	1	1
3	AA-55142	Air Element and Gasket Assembly	1	Composed of			
		Composed of		18	AA-72108	Outlet Strainer Assembly	1
	*	Element—Air filter	1	19	72107-A	Sleeve—Flexible	1
4	55141	Gasket—Air filter	2	20	AA-72475	Outlet Fitting and Tube Assembly	1
	A-55305	Fuel Filler Cap and Gasket Assembly	1	21	80451	Screw—Flat hd., 6-32 x 3/8"	4
		Composed of		22	72175	Cock—Shut-off	1
5	*	Cap—Filler	1	23	AA-55264	Fuel Line Assembly	1
6	72173	Gasket—Filler cap	1	24	AA-55167	Oil Supply Line Cap Assembly	1
7	55301	Valve—Relief	1	25	55107	Gasket	1
8	55302	Retainer—Relief valve	1	26	AA-55289	Fitting—Supply check valve w/tube	1
9	80592	Screw—Rd. hd., 3-48 x 1/4"	3	27	55110	Gasket	1
10	AA-55186	Fuel Tank Assembly with Decals	1	28	55133-A	Sleeve—Flexible	1
		Composed of		29	AA-55259	Oil Finder Assembly	1
		Fuel Tank Sub-Assembly	1	30	71762	Spring—Plunger	1
	55185	Decal—Starting Instructions	1	31	71763	Tube—Plunger	1
	55249	Decal—Homelite	1	32	71764	Plunger Button Assembly	1
11	55140-A	Plug—Oil filler	1	33	72971	Gasket—Air elbow	1
12	80582	Screw—Spin-lock, 8-32 x 5/8"	1	34	80572	Screw—Spin-lock, 10-32 x 5/8"	2
13	25527-1	Ball—Check, 5/32" dia.	2	35	80584	Screw—Spin-lock, 8-32 x 1"	2
14	55288	Spring—Check valve	2	36	55019-B	Adapter—Air cleaner	1
15	31733-1	Adapter—Straight	1	37	55059	Gasket—Air cleaner adapter	1
16	AA-55191	Oil Line Assembly	1				

* Not sold separately

PISTOL GRIP AND THROTTLE ASSEMBLY

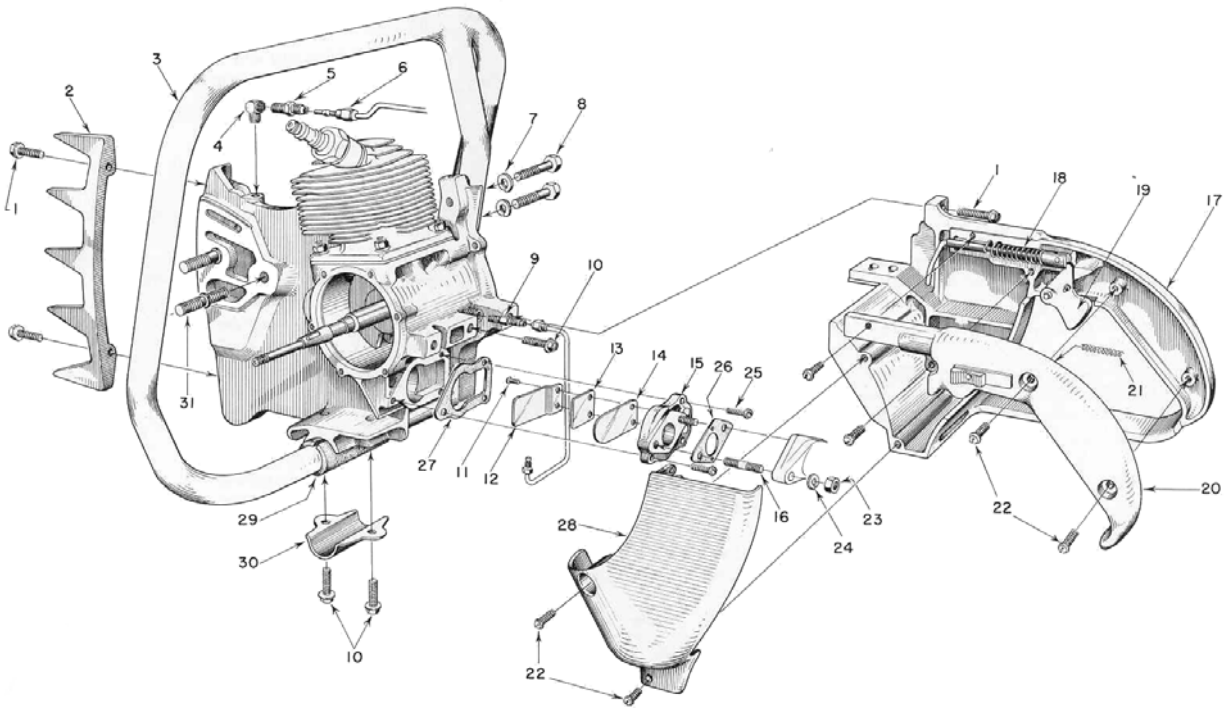


FIGURE 4

8

HOMELITE CHAIN SAW MODEL 17

PARTS LIST FOR FIGURE 4

Index No.	Part No.	Nomenclature	No. Required	Index No.	Part No.	Nomenclature	No. Required
1	80573	Screw—Hex hd., 1/4-20 x 1 1/8"	5	*		Throttle Rod Sub-Assembly	1
2	55103	Plate—Spiked bumper	1	55045		Spring—Throttle rod	1
3	AA-55120	Handle Bar for Model 17 (wrap around)	1	AA-55207		Throttle Trigger Assembly	1
	†AA-55119	Handle Bar for Model 17A (plain)	1	20	AA-55228	Grip Cover & Lock Assembly	1
4	31734	Elbow—Connector	1			Composed of	
5	31733-1	Adapter—Straight	1	*		Cover—Pistol grip	1
6	AA-55191	Oil Line Assembly	1	AA-55282		Throttle Lock Parts	1
7	83003	Washer—Lock, 5/16"	2			Composed of	
8	80463	Screw—Hex hd., alum., 5/16-18 x 1 1/2"	2	*		Button—Throttle lock	1
9	55267	Adapter—Straight	1	*		Lock—Throttle	1
10	80581	Screw—Hex hd., Spin-lock, 1/4-20 x 5/8"	4	21	72970	Spring—Throttle lock	1
	AA-55082	Reed Valve Adapter Assembly	1	22	80560	Screw—Spin-lock, 8-32 x 1/2"	7
		Composed of		23	81013	Nut—Hex, 1/4-20	2
11	80571	Screw—Spin-lock, 6-32 x 3/8"	2	24	83009	Washer—Lock, 1/4"	2
12	55105	Clamp—Reed limit	1	25	80583	Screw—Spin-lock, 10-32 x 3/4"	3
13	55078-A	Spring—Reed	1	26	73460	Gasket—Carburetor	1
14	55074-B	Reed	1	27	55116	Gasket—Reed valve adapter	1
15	55071-A	Adapter—Reed valve	1	28	55104	Shield—Carburetor	1
16	27464	Stud	2	29	55146	Cushion—Handle bar	1
17	AA-55281	Pistol Grip Assembly w/Pin	1	30	55145	Clamp—Handle bar	1
18	AA-55165	Throttle Rod & Spring Assembly	1	31	55056-A	Stud—Guide bar	2
		Composed of					

* Not supplied separately

† One cushion washer, part No. 55243 required for AA-55119 handle bar.

9

HOMELITE

CARBURETOR PARTS

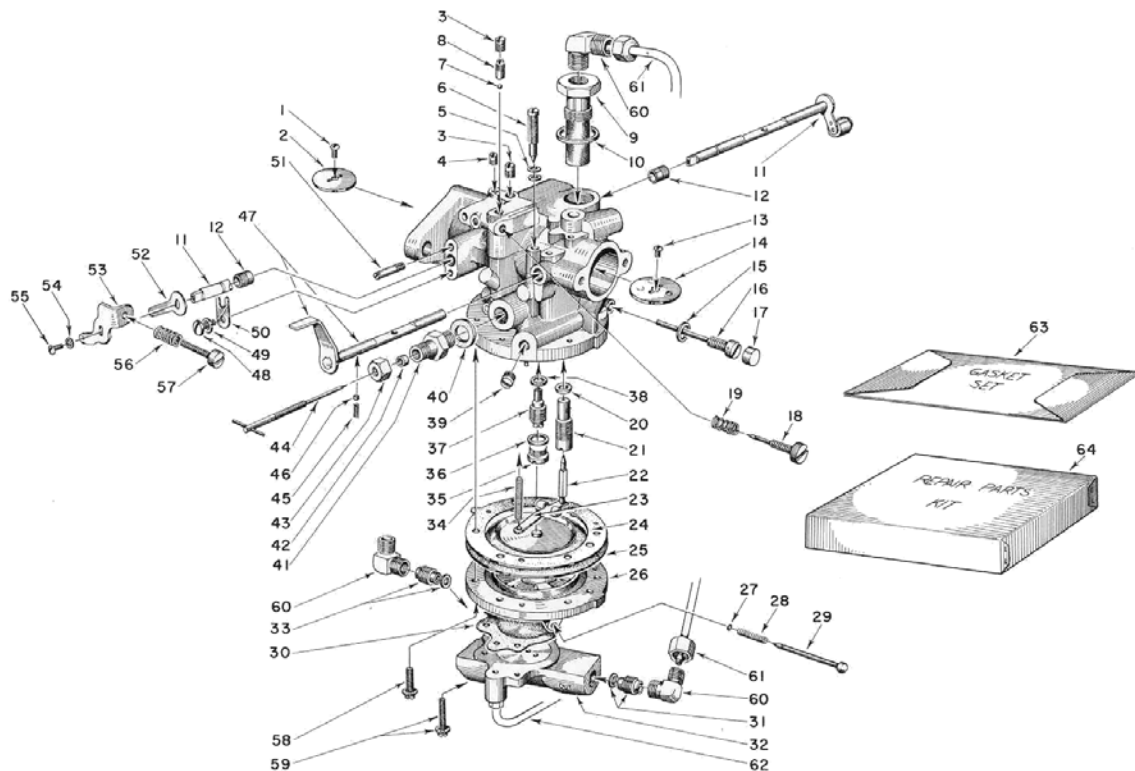


FIGURE 5

10

HOMELITE CHAIN SAW MODEL 17

PARTS LIST FOR FIGURE 5

Index No.	Part No.	Nomenclature	No. Required	Index No.	Part No.	Nomenclature	No. Required
	A-55285	Pump Carburetor Assembly	1		A-55321	Fuel Pump Body w/Checks	1
		Composed of				Composed of	
		Carburetor (Till. #HP-1A)	1	31	†55315	"OUT" Check Valve Assembly w/Gasket	1
		Composed of				Pump Body Only	1
1	†71519	Screw—Throttle shutter	1	32	55312	"IN" Check Valve Assembly w/Gasket	1
2	55308	Shutter—Throttle	1	33	†55314	Gasket—Pump check valve	2
3	73068	Screw—Channel plug, medium	2		†73270	Spring—Inlet control lever	1
4	73067	Screw—Channel plug, small	1	34	†73082	Screw—Nozzle channel plug	1
	†AA-73615	Inlet Control Screw w/Washers	1	35	73085	Gasket—Channel plug screw	1
		Composed of		36	73425	Nozzle—Main	1
5	73616	Gasket—Copper	2	37	†55310	Gasket—Main nozzle	1
6	*	Screw—Inlet control	1	38	73270	Screw—Drain plug	1
7	†60051	Ball—Idle check valve	1	39	71516	Main Adjustment Screw Assembly	1
8	†73251	Seat—Idle check valve	1		AA-73269	Composed of	
9	55306	Inlet Connection w/Screen	1	40	28055	Gasket—Main adj. screw gland	1
10	73266	Gasket—Inlet connection	1	41	28057	Gland—Main adj. screw	1
11	55307	Throttle Shaft & Roller Assembly	1	42	15037	Packing—Gland	1
12	72812	Bushing—Throttle shaft	2	43	28058	Nut—Packing	1
13	28049	Screw—Choke shutter	1	44	†73083	Screw—Main adjustment	1
14	73263	Shutter—Choke	1	45	73264	Spring—Choke friction pin	1
15	73268	Gasket—Pinion screw	1	46	71494	Pin—Choke friction	1
16	†73080	Screw—Control lever pinion	1	47	55317	Choke Shaft and Lever Assembly	1
17	73267	Cap—Pinion screw	1	48	73088	Screw—Throttle shaft clip	1
18	†73074	Screw—Idle mixture adj.	1	49	83000	Washer—Lock, #8	1
19	†73075	Spring—Idle mixture adj. screw	1	50	73086	Clip—Throttle shaft	1
	†73078	Inlet Needle & Seat w/Gasket	1	51	55309	Pin—Throttle stop	1
		Composed of		52	55172	Spring—Governor arm retaining	1
20	55344	Gasket—Inlet seat	1	53	55171	Lever—Throttle stop	1
21	*	Seat—Inlet	1	54	†83008	Washer—Lock #4	1
22	*	Needle—Inlet	1	55	†80006	Screw—Stop lever retaining	1
23	†73079	Lever—Inlet control	1	56	†28064	Spring—Idle stop screw	1
24	73071	Gasket—Main diaphragm	1	57	†71509	Screw—Idle stop (speed control)	1
25	†73070	Diaphragm—Main	1	58	73072	Screw w/lockwasher, short	7
	A-55322	Diaphragm Cover w/Plunger	1	59	†55316	Screw w/lockwasher, long	1
		Composed of		60	S-740-1	Elbow—Connector	3
26	*	Cover—Diaphragm	1	61	AA-55262	Supply Line Assembly	1
27	55323	Retainer—Plunger	1	62	AA-55266	Carburetor Pump Line Assembly	1
28	55324	Spring—Plunger	1	63	†55345	Gasket and Packing Set (GS-102)	1
29	55325	Plunger—Flushing	1	64	55346	Repair Parts Kit (RK-137)	1
30	†55313	Diaphragm—Fuel pump	1				

ENGINE PARTS

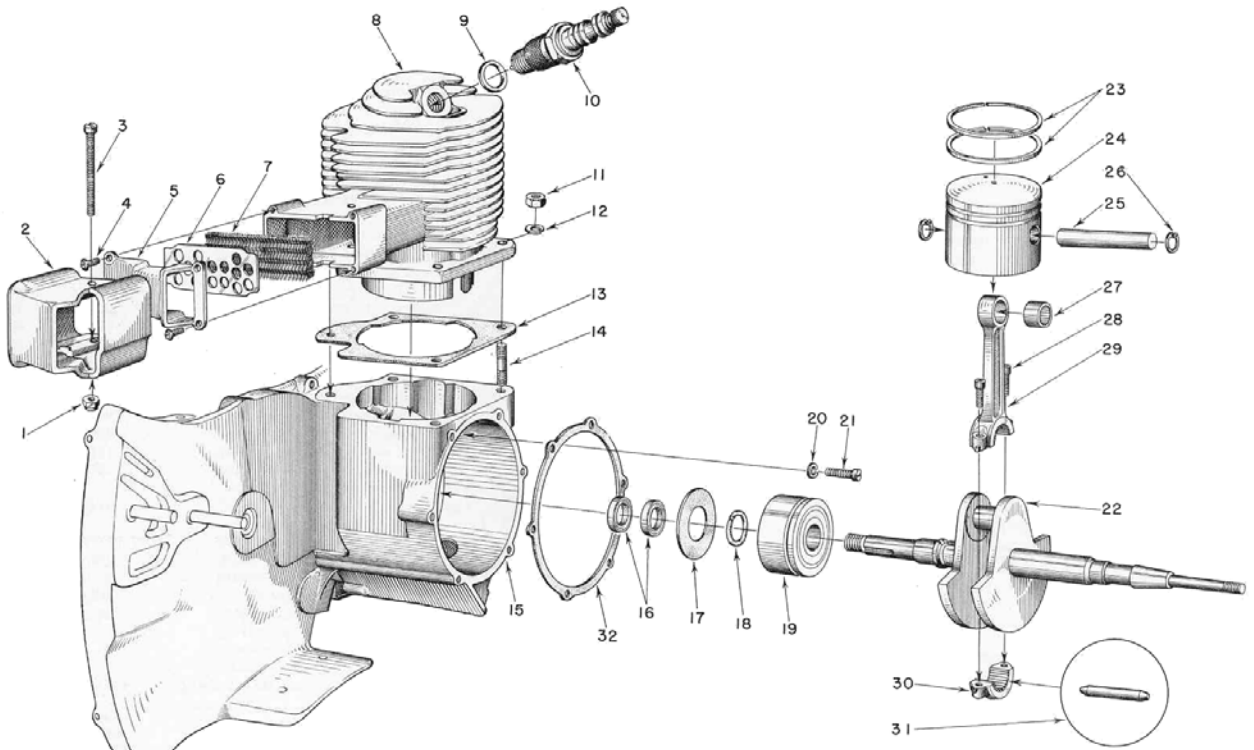


FIGURE 6

12

HOMELITE CHAIN SAW MODEL 17

PARTS LIST FOR FIGURE 6

Index No.	Part No.	Nomenclature	No. Required	Index No.	Part No.	Nomenclature	No. Required
1	81109	Nut—Flex-lok, 10-32	1	19	55193	Bearing—Main, ND #45503	1
2	55089-A	Damper—Heat	1	20	83061	Washer—Lock, special thin	2
3	80574	Screw—Rd. hd., 10-32 x 1 1/8"	1	21	19238-A	Screw—Main bearing retaining	2
4	80571	Screw—Spin-lock, 6-32 x 3/8"	4	22	55008-B	Crankshaft	1
5	55090-B	Cap—Exhaust flange	1	23	55038	Ring—Piston	2
6	55295-A	Retainer—Muffler element	1	AA-55279	Piston & Pin Assembly w/Retainers	1	
7	55199	Element—Muffler	1		Composed of		
8	55000-B	Cylinder	1	24	*	Piston	1
9	25038	Gasket—(included with spark plug)	1	25	*	Pin—Piston	1
10	72858	Spark Plug, Champion HO-3	1	26	55095	Ring—Piston pin retaining	2
11	81065	Nut—Hex, 1/4-28	4	AA-55195	Connecting Rod Assembly	1	
12	83009	Washer—Lock, 1/4"	4		Composed of		
13	55050	Gasket—Cylinder	1	27	55196	Bearing—Piston pin	1
	AA-55277	Crankcase Assembly w/Seats & Studs	1	28	80541	Screw—Allen cap, 8-32 x 1/2"	2
		Composed of		29	*	Rod—Connecting, upper half	1
14	71304	Stud—Cylinder	4	30	*	Cap—Connecting rod	1
15	*	Crankcase & Gear Case	1	31	AA-55280	Set of Needle Rollers	1
16	71597	Seal—Garlock	2		Composed of		
17	55048	Gasket—Crankcase sealing	1	72256	Roller—Needle (see inset)	27	
18	55047	Ring—Main bearing retaining	1	32	55049	Gasket—Back plate	1

* Not supplied separately

GEAR CASE AND SPROCKET PARTS

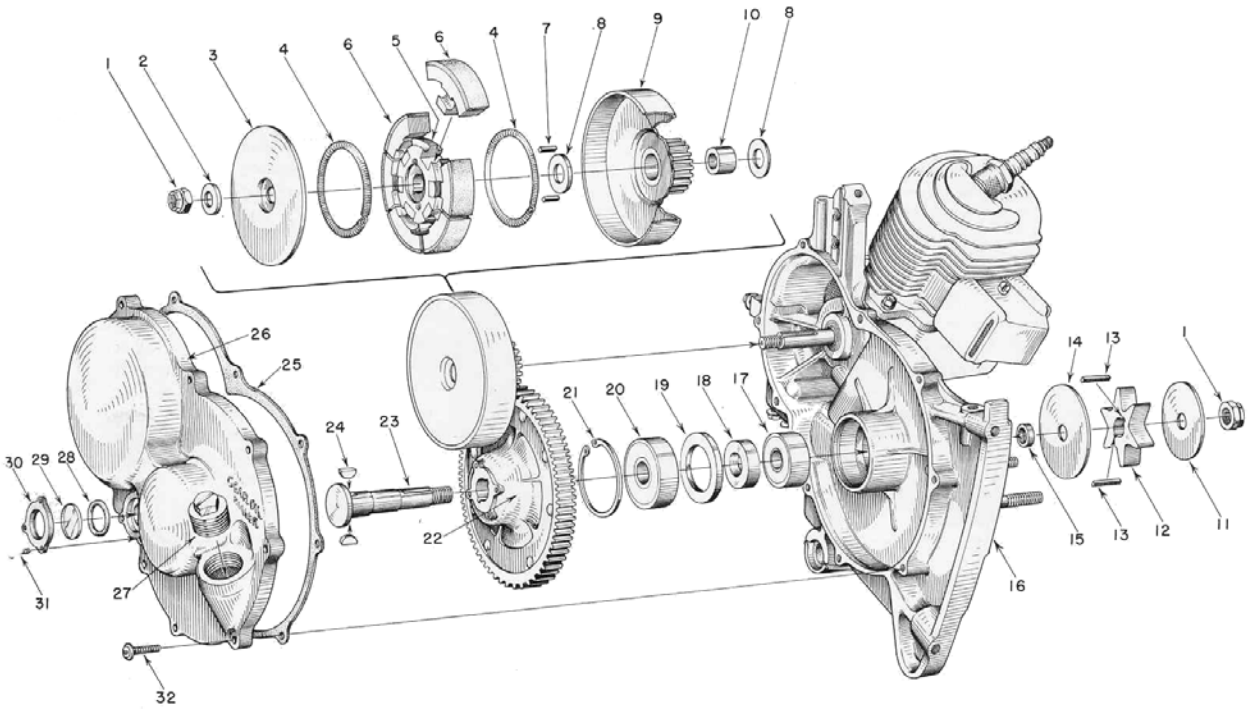


FIGURE 7

14

HOMELITE CHAIN SAW MODEL 17

PARTS LIST FOR FIGURE 7

Index No.	Part No.	Nomenclature	No. Required	Index No.	Part No.	Nomenclature	No. Required
1	81116	Nut—Flex-lok, 3/8"–24	2	17	55184	Bearing—Ball, MRC #201-SZZ	1
2	55036	Washer—Clutch retaining	1	18	55024	Spacer—Bearing	1
3	55126	Cover—Clutch	1	19	55025	Shoulder—Bearing spacer	1
	AA-55124	Clutch Spider Assembly	1	20	72040	Bearing—Ball, MRC #S-7-SZZ	1
		Composed of		21	28922	Ring—Retaining	1
4	55123	Spring—Clutch	2	22	AA-55068	Driven Gear Assembly	1
5	55075	Spider—Clutch	1	23	55005-A	Shaft—Sprocket	1
6	AA-55122	Clutch Shoe Assembly	6	24	55189	Key—Woodruff	2
7	55225	Key—Clutch	2		AA-55226	Gear Case Cover Assembly	1
8	55034	Washer—Thrust	2			Composed of	
9	AA-55086	Drive Gear and Drum Assembly	1	25	55053	Gasket—Gear case cover	1
10	55035	Bearing—Drive gear	1	26	*	Cover—Gear case	1
11	55163	Washer—Sprocket, outer	1	27	55140-A	Plug—Oil filler	1
12	55101	Sprocket—Chain drive	1	28	55100	Gasket—"O" Ring	1
13	55190	Key—Sprocket	2	29	55099	Window—Plastic	1
14	55162	Washer—Sprocket, inner	1	30	55098	Plate—Window	1
15	55023	Spacer—Sprocket	1	31	80571	Screw—Spin-lock, 6-32 x 3/8"	3
16	†	Crankcase Assembly w/Seals & Studs	1	32	80572	Screw—Spin-lock, 10-32 x 3/8"	9

* Not supplied separately

† AA-55277 — for breakdown see Figure 6, Engine Parts.

15

HOMELITE

SAW PARTS

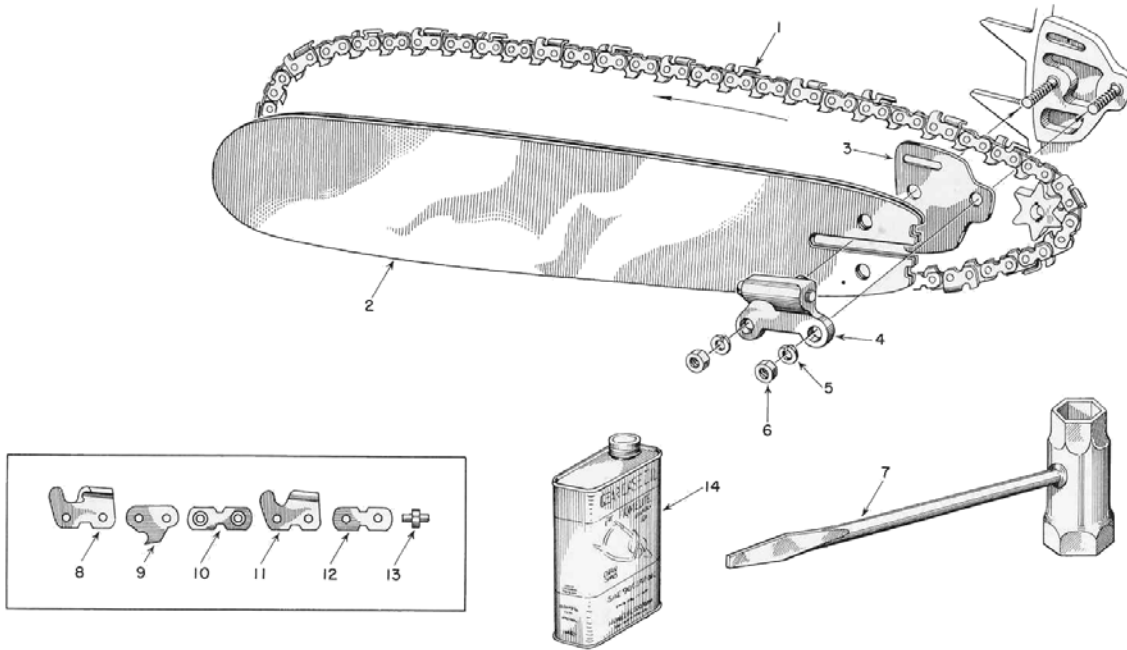


FIGURE 8

16

HOMELITE CHAIN SAW MODEL 17

PARTS LIST FOR FIGURE 8

Index No.	Part No.	Nomenclature	No. Required	Index No.	Part No.	Nomenclature	No. Required
1	A-55338	14" Oregon .063, No. 10 Chain w/Kit	1		55336-1	38" Oregon .063 Guide Bar	1
	AA-73338	18" Oregon .063, No. 10 Chain w/Kit	1	3	55128	Shim—Guide bar	1
	A-55319	20" Oregon .063, No. 10 Chain w/Kit	1	4	AA-55127	Adjusting Plate Assembly	1
	*AA-73340	23" Oregon .063, No. 10 Chain w/Kit	1	5	83018	Washer—Lock	2
	**AA-73342	28" Oregon .063, No. 10 Chain w/Kit	1	6	81089	Nut—Hex, 3/8-16	2
	AA-73344	33" Oregon .063, No. 10 Chain w/Kit	1	7	22808	Combination Wrench	2
	AA-73346	38" Oregon .063, No. 10 Chain w/Kit	1		AA-73314	Chain Repair Kit, Oregon No. 10 (.063-1/2")	1
2	A-55333	14" Homelite .063 Guide Bar	1			Composed of	
	A-55255	18" Homelite .063 Guide Bar	1	8	72964	Cutter—Left	1
	A-55331	20" Homelite .063 Guide Bar	1	9	73383	Link—Drive	1
	A-55256	23" Homelite .063 Guide Bar	1	10	AA-72961	Connecting Link & Rivet Assembly	2
	A-55257	28" Homelite .063 Guide Bar	1	11	72963	Cutter—Right	1
	55329-1	18" Oregon .063 Guide Bar	1	12	72960	Link—Connecting	2
	55327-1	23" Oregon .063 Guide Bar	1	13	72959	Rivet	4
	55330-1	28" Oregon .063 Guide Bar	1	14	55291	Homelite SAE-90 Gear Oil (pint can)	1
	55335-1	33" Oregon .063 Guide Bar	1				

* Also fits 14" Bow Saw

** Also fits 18" Bow Saw

PLUNGE CUT BOW ATTACHMENT

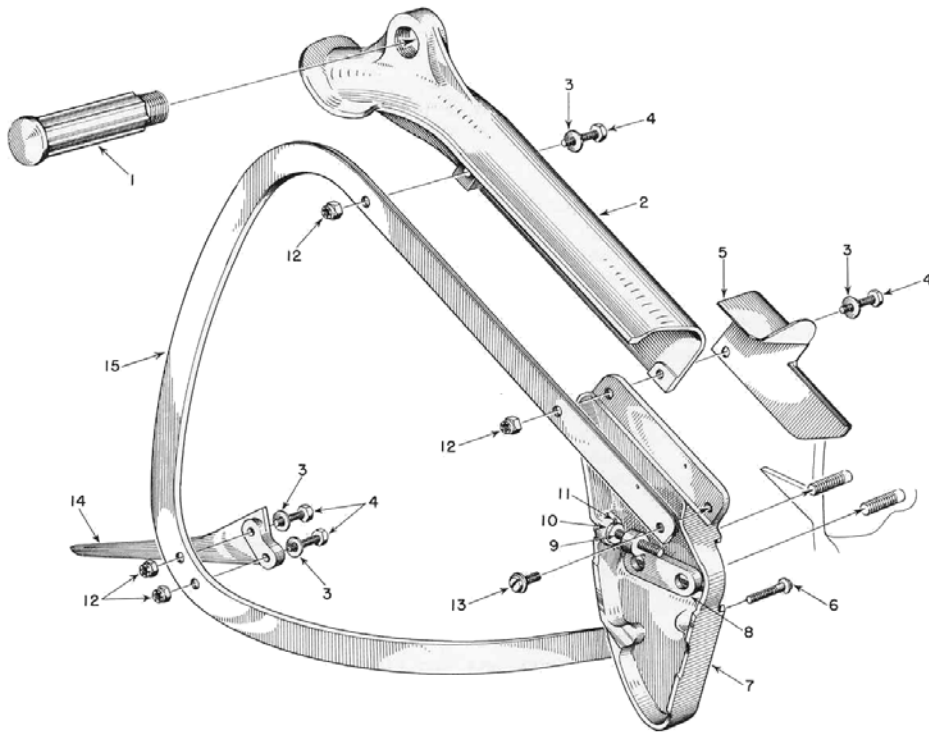


FIGURE 9

18

HOMELITE CHAIN SAW MODEL 17

PARTS LIST FOR FIGURE 9

Index No.	Part No.	Nomenclature	No. Required	Index No.	Part No.	Nomenclature	No. Required
	A-55299	14" Bow Attachment	1	9	80512-2	Screw—Rd. hd., 5/16-18 x 1 3/8"	1
	A-55298	18" Bow Attachment	1	10	72281-1	Nut—Adjusting plate	1
		Composed of			84056	Washer—Flat, 5/16" (not shown)	1
1	72226	Handle	1	11	86301	Pin—Cotter	1
2	72779-1	Guard—Bow chain	1	12	81112	Nut—Hex lock, 5/16-24	4
3	84001	Washer—Flat, 5/16"	4	13	80590	Screw—Spin-lock, 5/16-18 x 1/2"	1
4	80546	Screw—Hex hd., 5/16-24 x 1 1/4"	4	14	72784	Spur—Plunging	1
5	55297	Guard—Chain	1		73688	Plug—Bow guide	1
6	80593	Screw—Spin-lock, 5/16-18 x 3/4"	2	15	72783-1	Guide—14" Bow chain	1
7	A-55300	Mounting Plate Assembly	1		72844-1	Guide—18" Bow chain	1
		Composed of			AA-73235	Helper's End Assembly for 18" Bow Only	1
	55248	Plate—Bow mounting	1			Composed of	
	80580	Screw—Headless set	1		72827	Guard—Helper end (not shown)	1
8	55253	Plate—Adjusting	1		72226	Handle (same as index #1)	1